


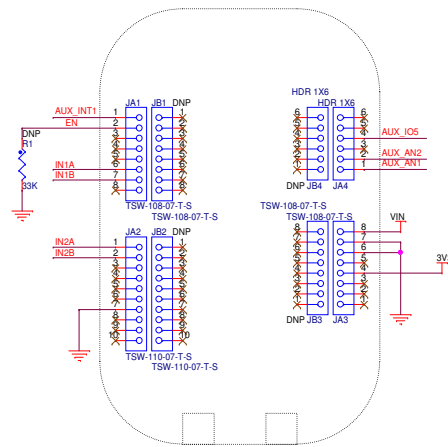
Table of Contents	
1	Revision History
2	FRDM-17C724EVB

Revision History			
Rev	Description	Date	Approved
A	A085 Release	14-Jun-16	Mareike Davis

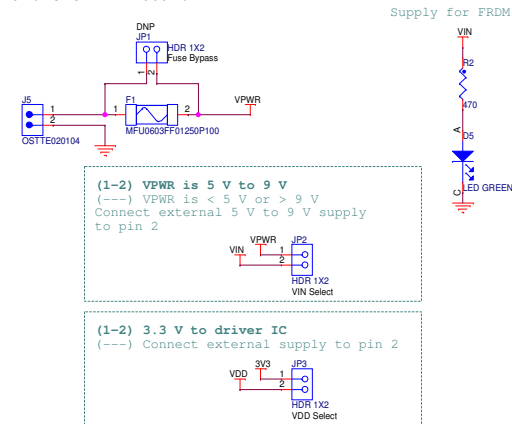
FRDM-17C724EVB

		Analog Sensor Product Group 6501 William Cannon Drive West Austin, TX 78735-8598	
<small>This document contains information proprietary to NXP and shall not be used for engineering design, procurement or manufacture in whole or in part without the express written permission of NXP Semiconductors.</small>			
ICAP Classification: CP: IUD: X PUB:			
Designer: Bruce Bohn		Drawing Title: FRDM-17C724EVB	
Drawn by: Mareike Davis		Page Title: Title Page	
Approved: Bruce Bohn		Size C	Document Number SCH-29072 PDF: SPF-29072
		Date: Tuesday, June 14, 2016	Rev A
		Sheet 1 of 2	

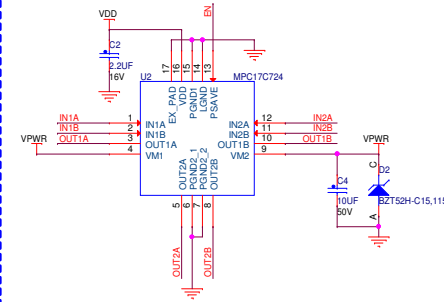
This board attaches to the TOP of the FRDM MCU board; refer to the user guide for a list of compatible FRDM boards



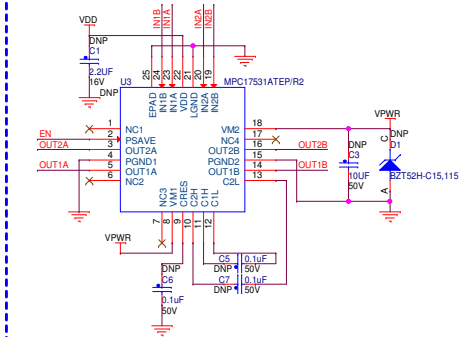
Circuit for supplying power to the driver IC and the FRDM board



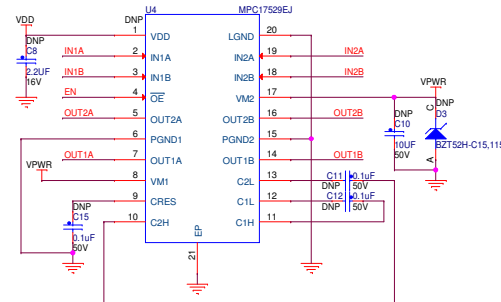
Stepper motor driver IC



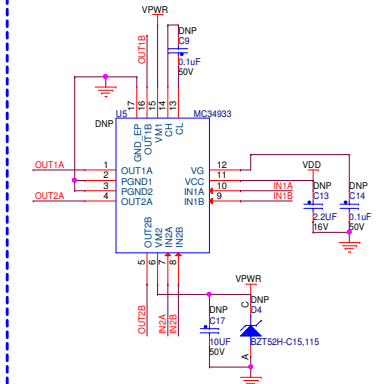
Stepper motor driver IC



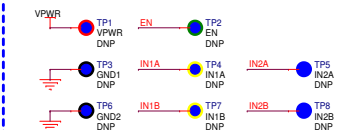
Stepper motor driver IC



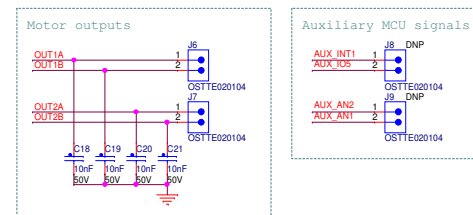
Stepper motor driver IC



Test points for various digital, analog, and power signals



Input and output connectors



ICAP Classification:		GP:	IUO: X	PUBI:
Drawing Title:				
FRDM-17C724EVb				
Page Title:				
Driver IC Schematic				
Size C	Document Number SCH-29072 PDF: SPF-29072			Rev A
Date:		Tuesday, June 14, 2016	Sheet	2 of 2